

..In replacement of Procol 2, find now..

PROLAB GLUE


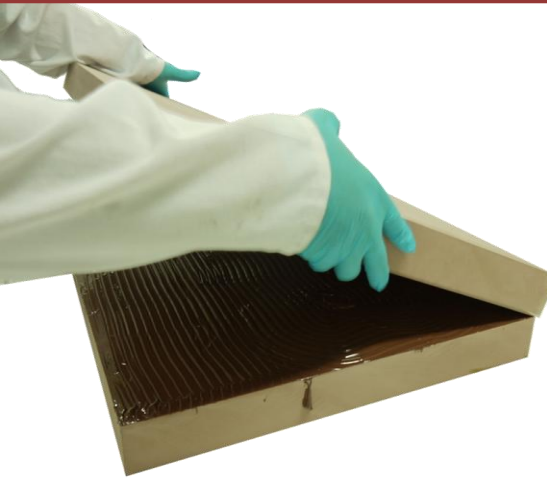
New dedicated glue for Prolab

DESIGN

MODELING

PROTOTYPING

BENEFITS

- 
- 
- ***Same hardness as Prolab & brown colour***
 - ***Easy manual mixing***
 - ***Convenient ready-to-use packaging***
 - ***Long open time***
 - ***Quick setting - Milling same day***
 - ***Odourless***
-

PROCESS: The Prolab Glue is especially made for the bonding of Prolab range of machinable boards.

1

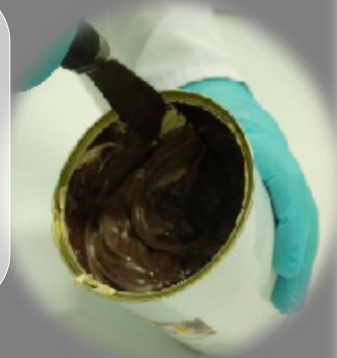
Thanks to its **ready-to-use packaging**, Prolab Glue is **simple to use**. No need to weigh.

>> Add Isocyanate paste into Polyol can.



2

>> Mix manually until colour and aspect become homogeneous and creamy.



3

The **assembly time of 30 minutes** provides a sufficient time for the **bonding of large parts**.

>> Apply Prolab Glue with a spatula on each side before joining, adjusting and clamping. Then proceed to the bonding of the boards.



4

To ensure an optimum bonding, it is necessary to apply pressure on the bonded boards.

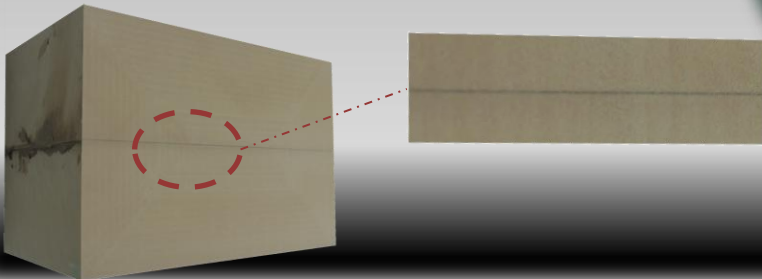
>> Proceed to a clamping of the boards



5

The quick **5 hours hardening time** allows a milling in the same day!

With a **hardness of 65-70 Shore D** similar to Prolab boards, Prolab Glue is easily machined.



PACKAGING & REFERENCE

PROLAB GLUE - 4 x (0.25kg + 0.5kg) – ref. 09136

